

Adaptations of Soccer Laws for Lane Youth Soccer Association

GENERAL - In non-dangerous situations, always emphasize instruction and player's skill development as opposed to assessing penalties. In dangerous situations, err with over-enforcement rather than under-enforcement. During games, center referee has final word in all calls regardless of a player's, coach's or parent's differing opinion. Disputed calls may be discussed with referees after full time and play is finished.

Special situations, all ages:

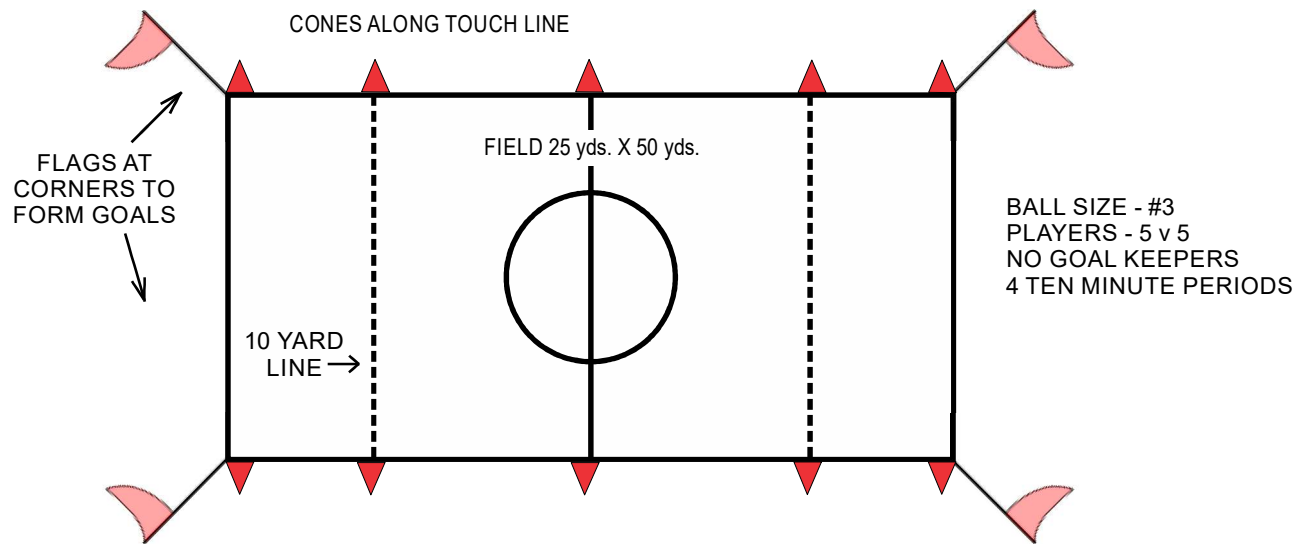
1. If a player is on the ground and still attempting to control the ball, stop play, instruct player, assess an indirect free kick for opponents.
2. Hand balls are allowed for protection of head or private body parts with open or clenched fists. Arms must remain against body. All other handling of the ball are assessed a direct free kick for opponents.

	U6	U8	U10	U12	U14 / U19
Age	4 1/2, 5	6, 7	8, 9	10, 11	12-13 / 14-18
Players on field	5 v 5	7 v 7	7 v 7	9 v 9	11 v 11
Ball size	3	3	4	4	5
Field size	25 X 50 yds	35 X 70 yds	40 X 65 yds	50 X 80 yds	60 X 120 yds
Periods	4 - 10 min. periods	4 - 10 min. periods	2 - 25 min. halves	2 - 30 min. halves	2 - 40 / 45 min. halves
1 min. break	midpoint of half	midpoint of half	midpoint of half	n/a	n/a
5 min. break	halftime	halftime	halftime	halftime	halftime
Substitutions	Referee approval	Referee approval	Referee approval	Referee approval	Referee approval
Goals	Entire end line No keeper	12 yds w/ flags No keeper	6 yard goal posts & net	6 yard goal posts & net	8 yard goal posts & net
Goal kicks	No	From within goal box*	From within goal box*	From within goal box*	From within goal box*
Corner kicks	No	Yes	Yes	Yes	Yes
Throw-ins	Between 10 yd. lines lenient form calls	Between 12 yd. lines lenient form calls	Anywhere, moderate form calls	Anywhere, strict form calls	Anywhere, strict form calls
Offside	No	No	Yes, Instructional	Yes	Yes
Heading	No	No	No	Yes, not encouraged	Yes
Slide tackle	No	No	No	Yes, not encouraged	Yes
Free kicks	Direct Free Kick Between 10 yd. lines	Direct Free Kick Between 12 yd. lines	Direct Free Kick for flagrant violations	Regular calls	Regular calls
Whistle/card use	Limited whistle/ no cards	Moderate whistle/ no cards	Moderate whistle/cards for flagrant misconduct	Full whistle & cards	Full whistle & cards

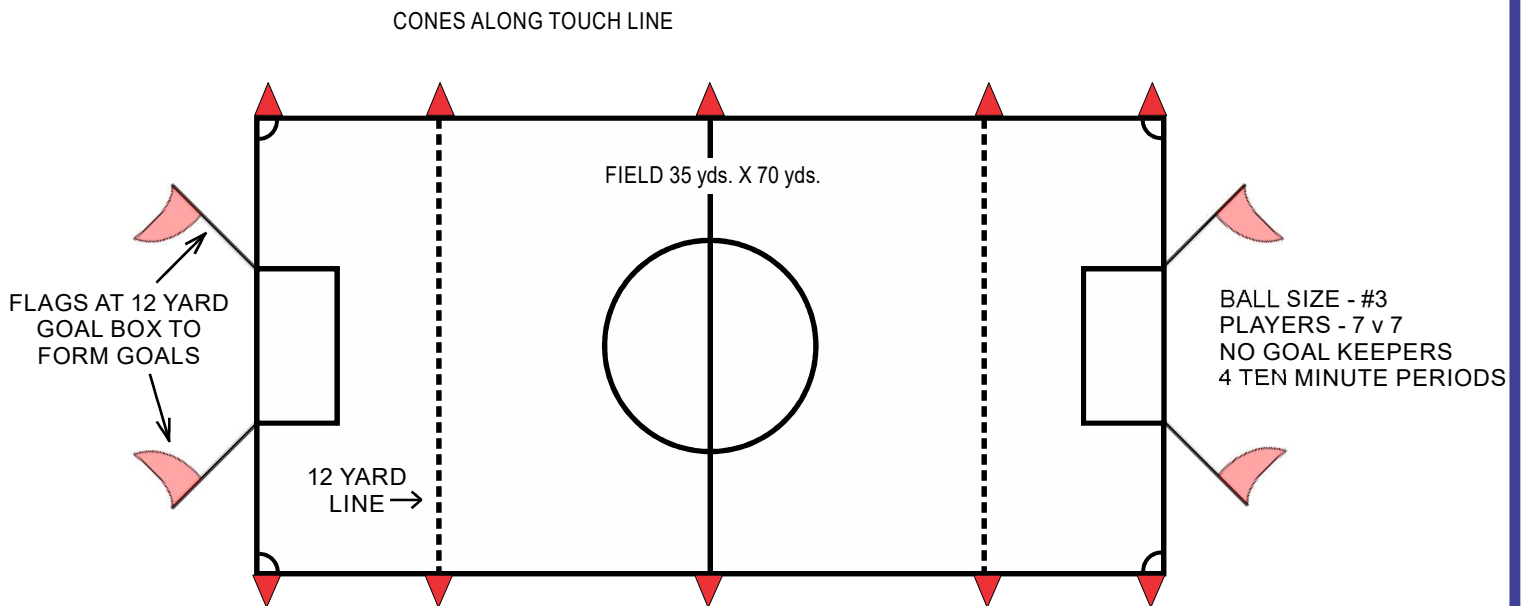
* Kicked ball must clear Penalty Area (or 12 yard line) before contact by either team. All opponents must be outside penalty area; kicking team may remain in penalty area.



U6 Field of Play



U8 Field of Play

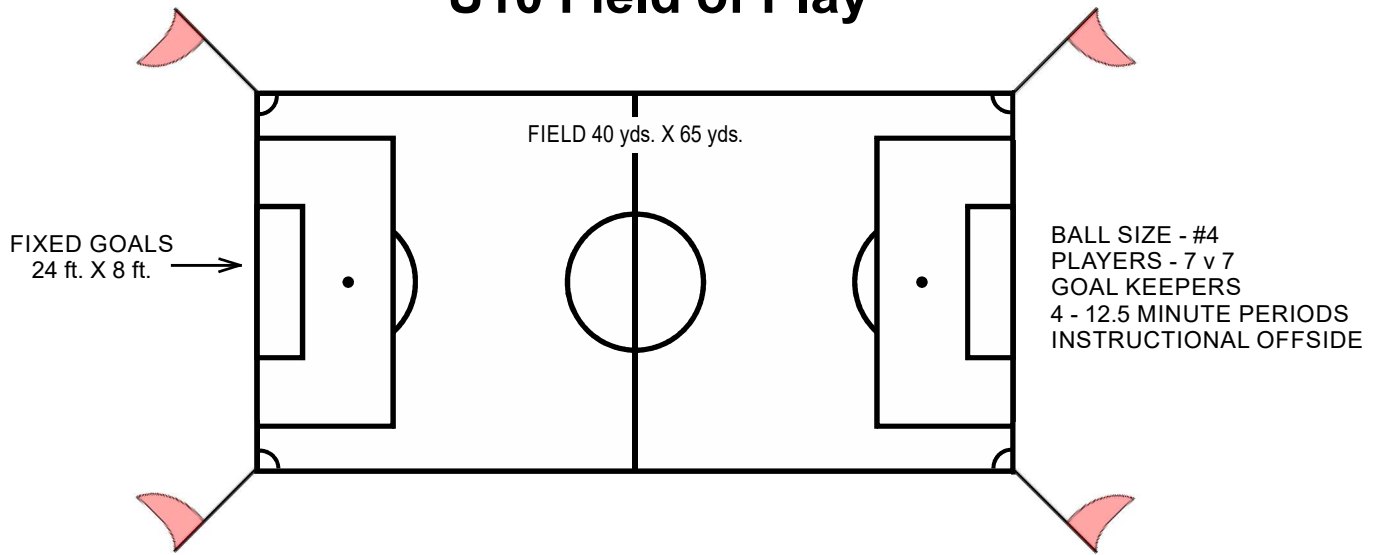


Fun
FOR ALL

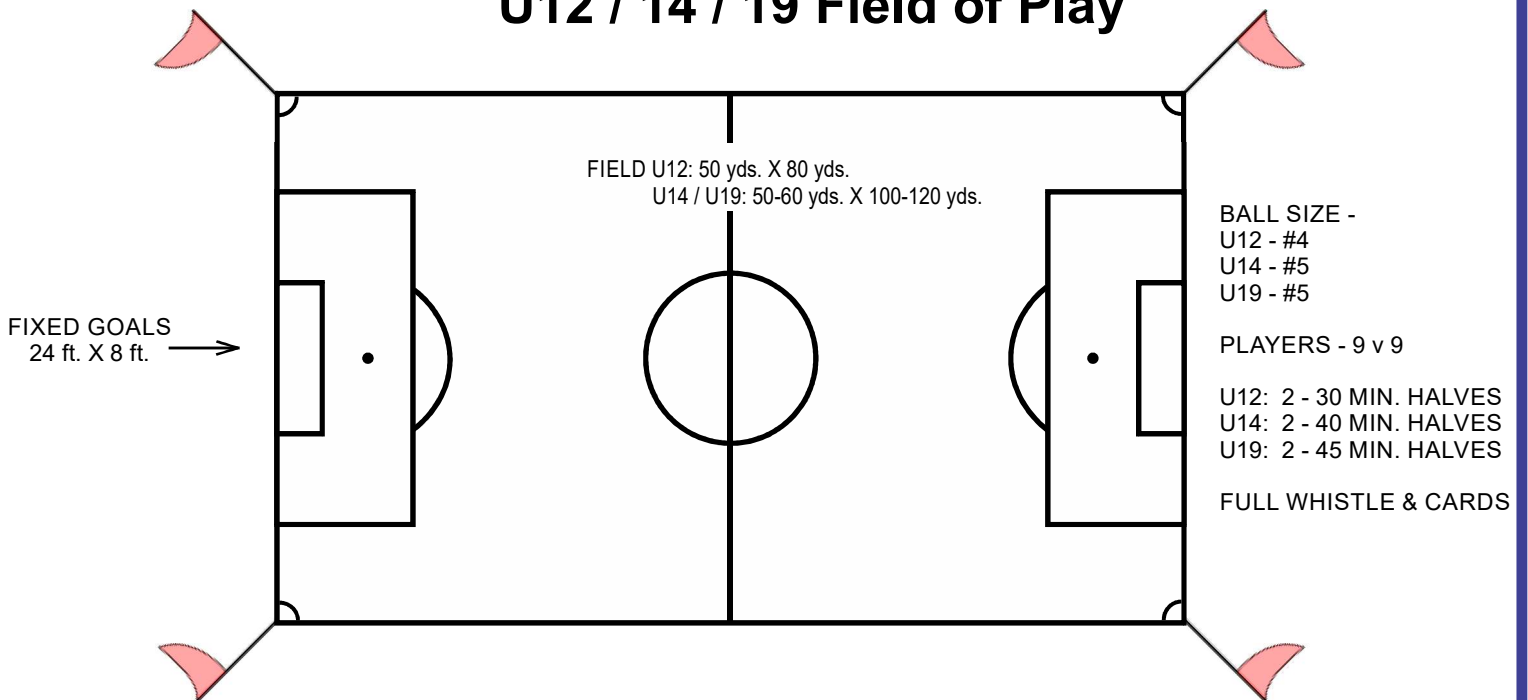
LYSA

LANE YOUTH SOCCER ASSOCIATION

U10 Field of Play



U12 / 14 / 19 Field of Play



Fun
FOR ALL

LYSA

LANE YOUTH SOCCER ASSOCIATION